

# TECHNICAL DATASHEET

## UNIDACHS 110

**TML**  
working solutions

© 2019, TML Technik GmbH. All rights reserved.

**Operation weight: approx. 3.200 kg**  
**Diesel drive with 26 kW / 18,5 kW**  
**Remote controlled**



Picture shows fully equipped machine with mounted hydraulic hammer and lighting package ready for operation.

### Undercarriage

Track width	1.100 mm
Base plates	200 mm
Travel speed	2,9 km/h at 26 kW 2,6 km/h at 18,5 kW
Gradability	50 %
Brakes	Hydraulically actuated multi disc parking break
Outriggers	4 pieces, separately controllable

### Superstructure

Hydrostatic slew drive with axial piston motor and planetary gear.

Disc parking break	
Slew motion	10.000 Nm
Slewing speed	0 – 3,5 rpm

### Diesel drive

Make	Kubota
Model	V1505, 4 cylinder diesel drive
Rated power	26 kW / 18,5 kW
Engine capacity	1,5 l
Fuel tank capacity	60 Liter

### Lighting

Working light	2 x LED light
Warning beacon	1 x LED light yellow
Flashlight	1 x Xenon light blue

### Radio remote control (included)

Ergonomical light weight version radio remote, 2 Joysticks with dead-man's safety control, quick-shift-handling, mode selector, illuminated multi colour display, one hand drive mode, tool-control, emergency stop switch on the transmitter, hip belt carrying system.

### Tools and attachments

Hydraulic hammer up to 350 kg, rotary drum cutter.

### Safety equipment for operator and machine (standard machine configuration)

Radio remote control with permanent radio link monitoring, "Dead Man" safety system on the remote control transmitter unit, LED control lights on the remote control, display of machine status and faults in the display of the remote control, emergency stop button on the remote control transmitter and the machine, bright and even illumination of the work area, yellow LED safety beacon and warning beacon, blue XENON flashlight, signal horn, acoustic warning signal whilst driving the tracks, acoustic warning signal at interferences, pipe break protection valves on the lift cylinder, the rotation unit and on the outrigger cylinders, manual lowering possibility of the boom in parking position, battery disconnect switch.



### Boom

Two stage tiltable boom with integrated rotation unit.	
The boom is completely closed off to protect the parts inside the boom i.e. hydraulic cylinders and hoses against the radiation of heat and any falling objects.	
Max. reach	3.300 mm (tool axle)
Boom rotation	360°, endless
Boom rotation speed	0 – 5 rpm
Boom rotation torque	3.000 Nm

### Hydraulic system

Axial piston variable displacement pump with demand-driven flow and load-controlled pressure control, fully variable, temperature-controlled cooling capacity control, cooling system with periodic reversion of rotation for cleaning.

Max. pump pressure	250 bar
Max. flow rate	130 l/min (26 kW) 105 l/min (18,5 kW)
Hydraulic oil quantity	85 Liter

### Electrical system

System voltage	24 V
Batteries	2 pcs.

### Paint

Superstructure / Boom	Yellow, RAL 1007
Undercarriage	Black, RAL 9005

**LYCKAD**

Av. Javier Prado Este 3579 San Borja, Lima 41 – PERÚ

Telefono: +(51) 954-638696 / 998-700731

ventas@corporacionlyckad.com / gerencia@corporacionlyckad.com

www.corporacionlyckad.com

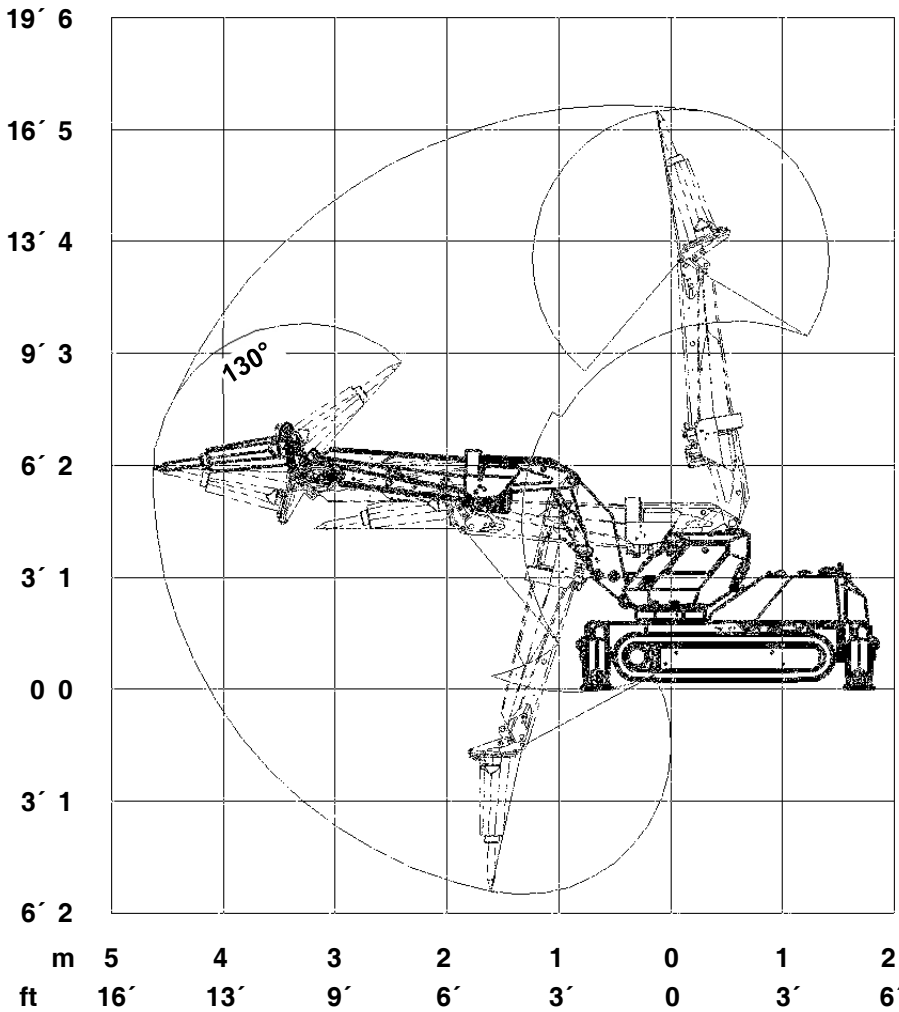
# TECHNICAL DATASHEET UNIDACHS 110



working solutions

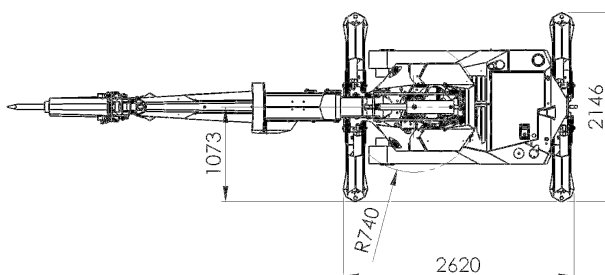
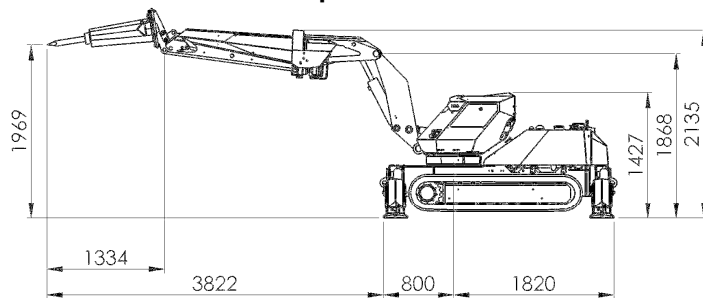
© 2019, TML Technik GmbH. All rights reserved.

## Kinematics & Dimensions



Range view with hydraulic hammer SB302.

## Operation



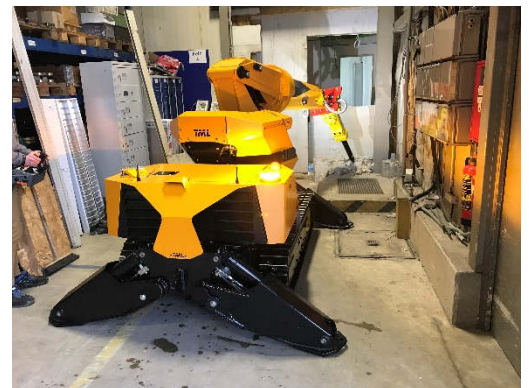
## Optional equipment

Arctic-Pack (temperature-controlled heating for hydraulic and fuel tank, engine pre-heating, 230V / 115V),  
Lighting package (2 additional LED working lights),  
Quick change pads for base plates,  
Gummed base plates.

## Hot Cleaning



## Demolition



## Transport

