

# TECHNICAL DATASHEET

## UNIDACHS 220

**Basic weight: approx. 5.300 kg (Diesel),  
approx. 5.100 kg (Electro),  
Operation weight depending on used tool.  
Telescopic stroke: 2.000 mm  
Diesel drive with 55 kW  
or alternatively  
“Eco Line”: Electro drive with 37 kW  
Remote controlled**



Picture shows fully equipped machine with mounted hydraulic hammer and lighting package ready for operation

### Undercarriage

Track width	1.380 mm
Base plates	200 mm
Travel speed	0 – 2,9 km/h
Gradability	50 %
Brakes	Hydraulically actuated multi disc parking break, brake valves
Outriggers	4 pieces, separately controllable

### Superstructure

Hydrostatic slew drive with axial piston motor and planetary gear.

Slew motion	360°, continuously
Slewing speed	0 – 2,8 rpm

### Diesel drive

Make	DEUTZ AG
Model	TCD 2.9, 4 cylinder diesel drive
Rated power	55 kW
Engine capacity	2,9 l
Fuel tank capacity	65 Liter
Speed control	Adaptive

### Electro drive 3-Phase (alternative)

Make	Siemens
Rated power	37 kW at 400 V / 50 Hz 37 kW at 460 V / 60 Hz
Voltage	400 V or 460 V

### Radio remote control (included)

Ergonomical light weight version radio remote, 2 Joysticks with dead-man's safety control, quick-shift-handling, mode selector, illuminated multi colour display, one hand drive mode, tool-control, emergency stop switch on the transmitter, hip belt carrying system.

### Tools and attachments

Hydraulic hammer up to 500 kg, rotary drum cutter, bucket 0,2 m<sup>3</sup>.

### Safety equipment for operator and machine (standard machine configuration)

Radio remote control with permanent radio link monitoring, Joysticks with “Dead Man” monitoring against inadvertent operation, LED control lights at the remote control, tilt sensor at transmitter unit, indication of machine status and faults in the display, emergency stop button at the transmitter and the machine, bright and all-over illumination of the work area with LED and Xenon lights, yellow LED warning beacon, blue XENON flashlight for indication of enabled remote control, signal horn and flash, acoustic warning signal whilst driving the tracks, acoustic and optical warning signal at interferences, pipe break protection valves at the lift cylinder, the boom rotation unit and at the outrigger cylinders, manual lowering possibility of the boom in parking position, battery disconnect switch.



### Cradle / Telescopic boom

Completely closed for optimal protection of inner part.

Telescopic stroke	2.000 mm
Boom rotation	360°, continuously
Boom rotation speed	0 – 5 rpm
Boom rotation torque	3,7 kNm
Push and pull force	17 kN

### Hydraulic system

Axial piston variable displacement pump with demand-driven flow and load-controlled pressure control, fully variable, temperature-controlled cooling capacity control.

Max. pump pressure	250 bar
Max. flow rate	150 l/min
Hydraulic oil capacity	130 Liter

### Electrical system

System voltage	24 V
Batteries	2 pcs. (diesel drive)

### Paint

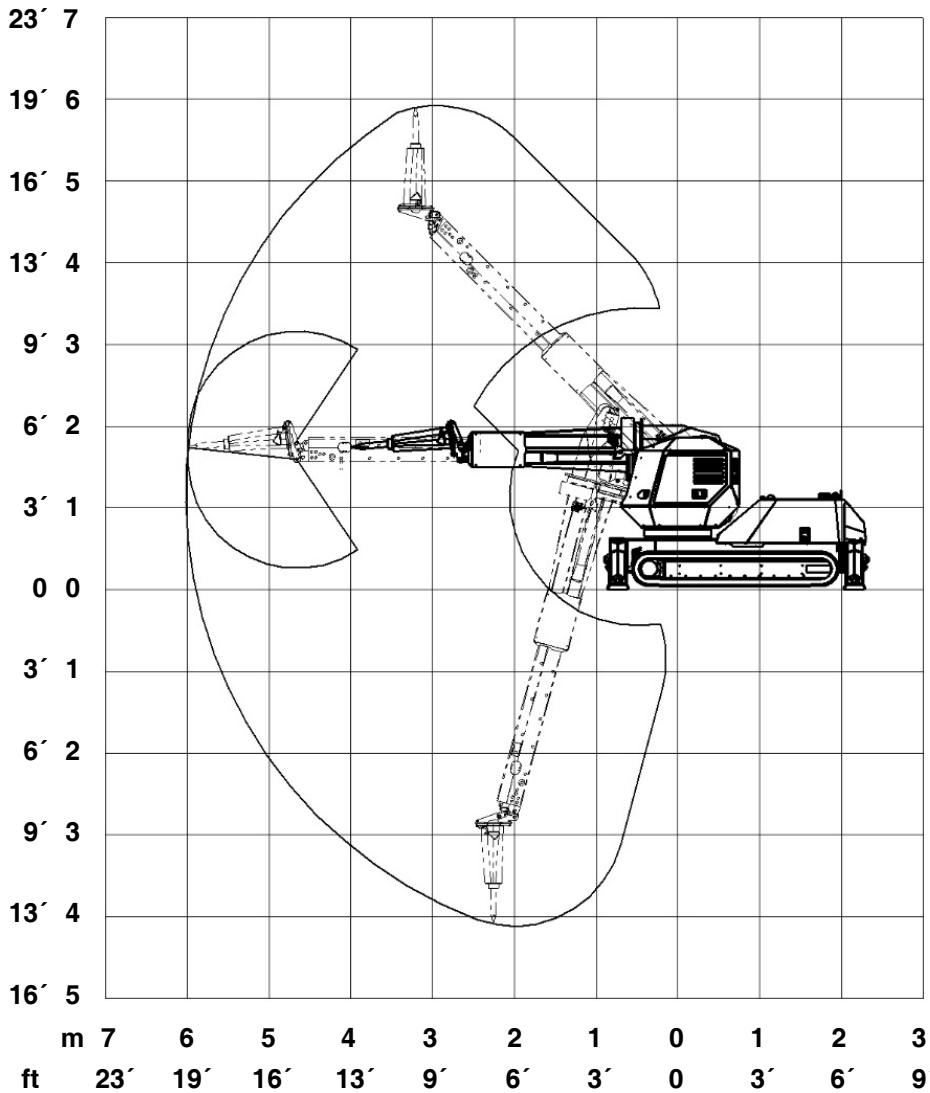
Superstructure / Boom	Yellow, RAL 1007
Undercarriage	Black, RAL 9005

### Lighting

Working light	2 x LED / 2 x Xenon light
Warning beacon	1 x LED light yellow
Flashlight	1 x Xenon light blue

# TECHNICAL DATASHEET UNIDACHS 220

## Kinematics & Dimensions



Range view with hydraulic hammer SB302.

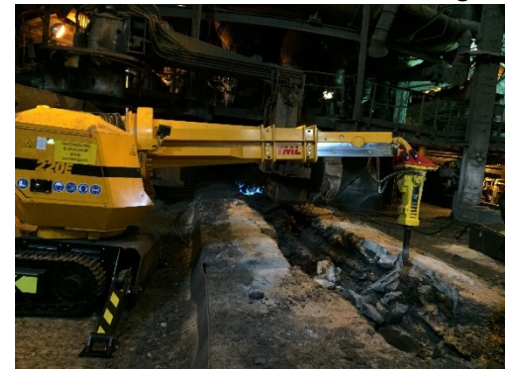
## Optional equipment

- Arctic-Pack (temperature-controlled heating for hydraulic and fuel tank, engine pre-heating, 230V),
- Lighting package (2 additional Xenon working lights),
- Quick change pads for base plates,
- Gummed base plates.

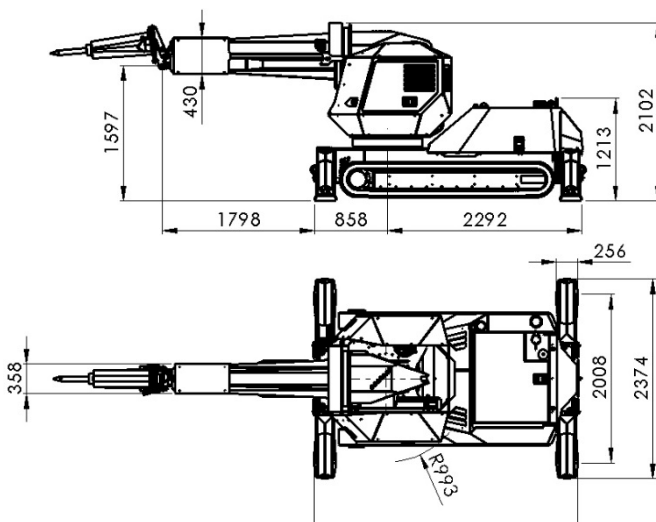
## Copper Furnace Debricking



## Blast Furnace Runner Debricking



## Operation



## Transport

