

# TECHNICAL DATASHEET

## UNIDACHS 430

**TML**  
working solutions

© 2019, TML Technik GmbH. All rights reserved.

**Operation weight: approx. 17.000 kg**  
**Telescopic stroke: 3.000 mm**  
**Diesel drive with 97 kW**  
**or alternatively**  
**Electro drive with 75 / 90 kW (50 / 60 Hz)**



Picture shows fully equipped machine with mounted double ripper hook and hydraulic hammer ready for operation.

### Undercarriage

Crawler chain	B2
Base plates	Triple grouser, HD, 500 mm
Travel speed	3,2 km/h
Gradability	45 %
Draw bar pull	82 kN
Brakes	Spring set, hydraulically released wet multi disc brake
Ground pressure	5,9 t / m <sup>2</sup> (500 mm base plates)

### Superstructure

Hydrostatic slew drive with axial piston motor and planetary gear.	
Slew motion	360°, continuously
Slewing speed	0 – 5,2 rpm
Slew brake	Spring set, hydraulically released wet multi disc brake

### Diesel drive

Make	DEUTZ AG
Model	4 Cylinder, TIER 4 final / Euro IV
Rated power	97 kW at 2.200 rpm
Engine capacity	3.600 cm <sup>3</sup>
Torque	490 Nm at 1.600 rpm
Cooling	fluid
Air filter	2-stage, with electrical contamination indicator
Fuel tank capacity	230 Liter
AdBlue tank capacity	10 Liter

### Electro drive 3-Phase (alternative)

Rated power	75 kW at 50 Hz and at 1.500 rpm 90 kW at 60 Hz and at 1.500 rpm
Voltage	380 V, 400 V or 500 V
Frequency	50 Hz or 60 Hz

### Tools and attachments

Single or double ripper hook, hydraulic hammer, pneumatic hammer, converter tap hole drill, porous plug pusher, various sized buckets, ripper bucket, rotary drum cutter, boom extensions, single point lifting bail as well as customer defined special tools.

Example:  
Double  
Ripper  
hook



### Safety equipment for operator and machine (standard machine configuration)

Heat resistant safety glass all round, strong steel protective grating in front of windscreen, fine wire mesh in front of windscreen to protect against heat radiation, pelvic restraint, safety lever as circuit breaker for the pilot controls in the cabin, pipe-break protection system on the boom lift cylinders, 3 fully heat resistant headlights to illuminate the working area, 1 yellow safety beacon on the rear of the machine, emergency stop button at the back, signal horn, acoustic warning signal whilst driving the tracks, hydraulically actuated wet multi disc brake on the rotary drives, first aid kit, fire extinguisher on board, glass breaker hammer in the cabin.



### Cradle / Telescopic boom

Completely closed for optimal protection of inner part.	
Telescopic stroke	3.000 mm
Boom rotation	360°, continuously
Boom rotation speed	0 – 11 rpm
Boom rotation torque	14,8 kNm
Push and pull force	114 / 56 kN
Tool ripping force	73 kN
Boom guide rollers	12 Pcs.

### Hydraulic system

Boom lift cylinders with pipe-break protection system.	
Type	Load-Sensing
Operating pressure	330 bar
Hydraulic oil tank capacity	365 Liter

### Electrical system

System voltage	24 V
Batteries	2 pcs.

### Lighting

Superstructure	2 x Xenon working lights
Boom	1 x Xenon working light
Safety beacon	1 x Yellow

### Paint

Superstructure / Boom	Yellow, RAL 1007
Undercarriage	Black, RAL 9005

### Operator's cabin

Including extensive safety features and air conditioning.	
Surround noise level LWA	103 db (A)
Inside cab noise level LpA	75 db (A)

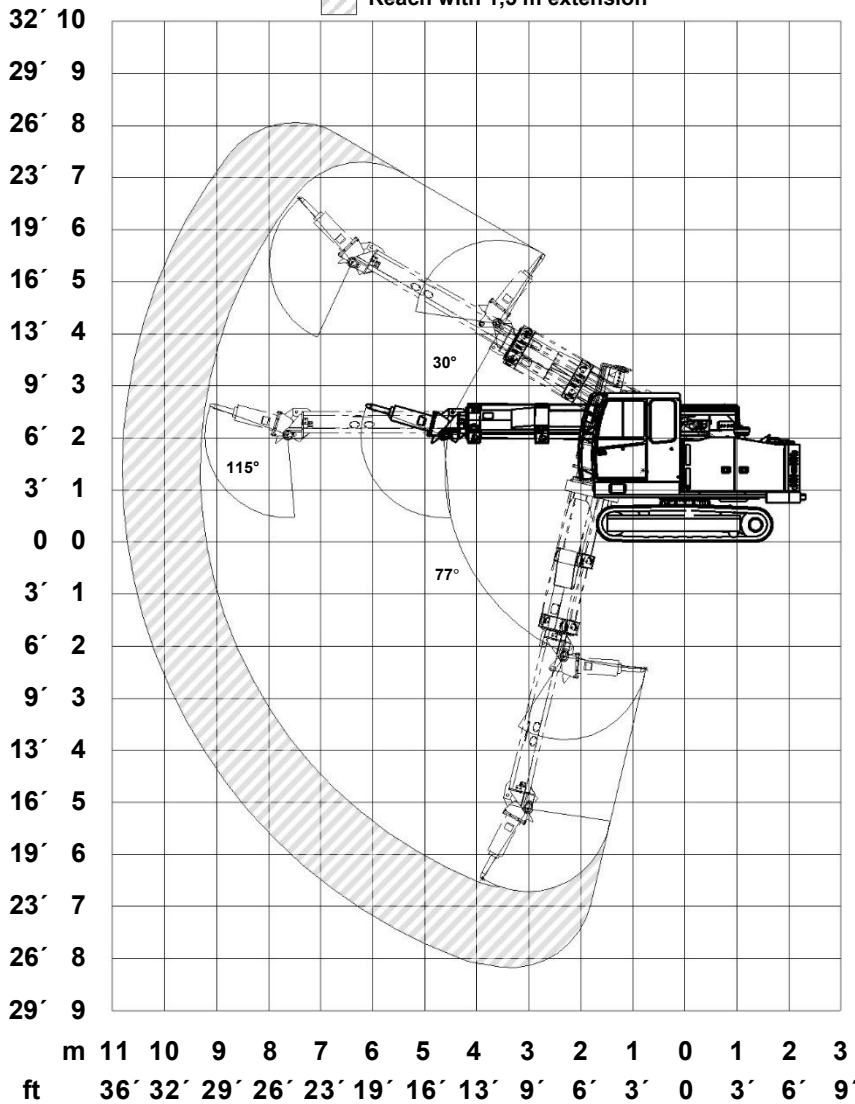
**LYCKAD**

Av. Javier Prado Este 3579 San Borja, Lima 41 – PERÚ  
Telefono: +(51) 946-405388 / 998-700731  
ventas@corporacionlyckad.com / gerencia@corporacionlyckad.com  
www.corporacionlyckad.com

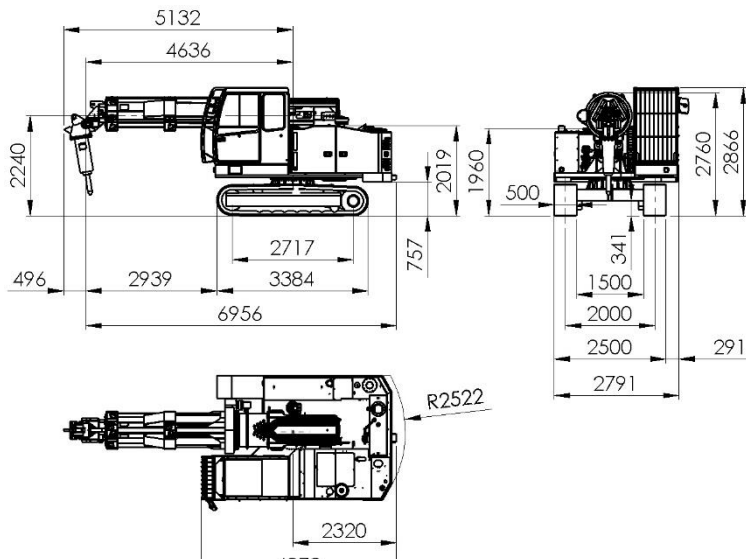
# TECHNICAL DATASHEET UNIDACHS 430

## Kinematics & Dimensions

 Reach with 1,5 m extension



Range view with hydraulic hammer SB452.



## Optional equipment

- Base plates 600 mm,
- FOPS (Falling Objects Protection System) on the cabin roof,
- Arctic pack (hydraulic oil, engine compartment and fuel tank pre-heating system),
- Stationary heater,
- Additional working headlights,
- Central lubrication system (basic machine),
- Radio or cable remote control,
- Rear and side camera system,
- Fire suppression system,
- Emergency release system for slew and crawler drive,
- Different boom operation angles,
- Protection rails,
- Quick change pads for base plates,
- HFDU – fire retardant hydraulic oil,
- Customer defined special equipment.

## Hot Ladle Cleaning



## Hot Ladle Cleaning

